



Arval

by ArcelorMittal

K'energy[®] – your **key** to save energy

Flash info

The economic way to comply with latest standards and rules for sustainable and energy-saving construction!

K'energy^{*}, is a patented multifunctional system for facades fulfilling highest demands on thermal insulation and aesthetic. Metal, glass, ceramic, stone or wood ...

K'energy is forming the structural and insulated support for a wide range of traditional or modern cladding materials.

^{*}Patent pending

$U = 0,13 \text{ W/m}^2\text{K}$

Flash info

$U = 0,13 \text{ W/m}^2\text{K}$

K'energy® -
your **key** to save energy

Architects : Luc ARSENE-HENRY Jr & Alain TRAUD
Architects mandataires et POGGI & GARRIGUE Architectes
Associés - BORDEAUX (33)

EXCELLENCE IN CREATIVITY – CLADDING WITHOUT THERMAL BRIDGES



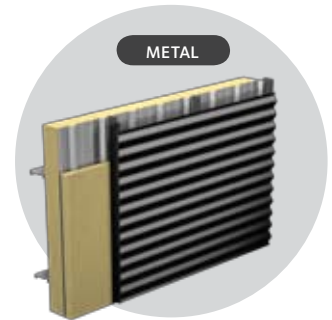
STONE



GLASS



WOOD



METAL

K'energy, the multifunctional facade system!

The system-components of **K'energy** grant continuous thermal insulation and a solide structural base for the variable external claddings.

Approved technique

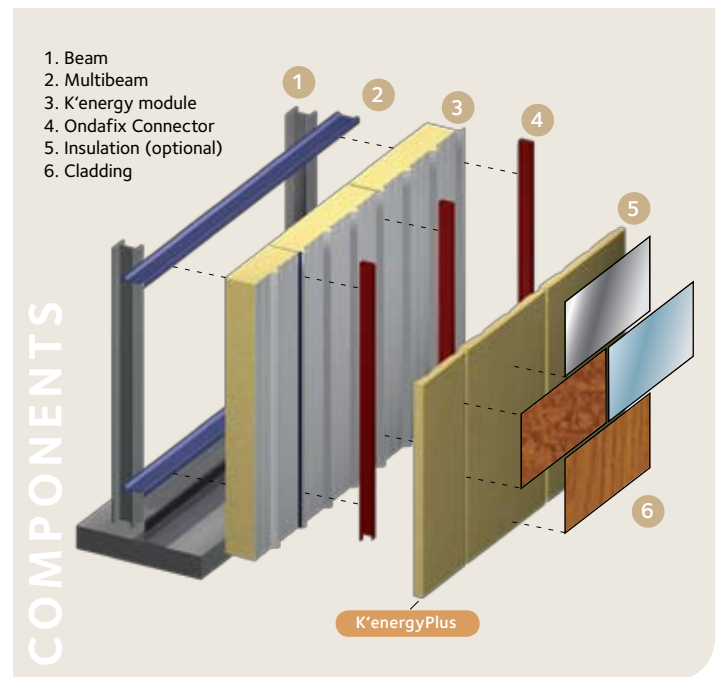
K'energy components are based on over 40 years of experience and innovation. Approved building components in a new „look“ allowing freedom for design and function.

K'energyPlus

Where requested, **K'energy** can be covered by an additional thermal insulation. Thus improving U-values and acoustic features. For some cladding materials a ventilation of the backside is essential. Also here is **K'energy** the right partner! Energetic designed joints and weather resistant accessories allowing perforated or expanded metal claddings.

No thermal bridges

The elimination of thermal bridges is a main target of up-to-date construction methods. **K'energy** is an ideal and economic solution to match these requirements. Reduced to a limited number of primary fixings only, **K'energy** has no transversal thermal losses. The main structural component, the patented “Ondafix” spacer, is placed on the external skin of the base element providing a full thermal brake between the insulation level and the external cladding.



Advantages

- > no thermal bridges
- > high U-values
- > will support variable external claddings
- > K'energyPlus for best insulation!
- > economic building system
- > less wall thickness, more working space!

Characteristics

K'energy & K'energyPlus System	
Type	140 / 160 / 180 / 200 / 220
Cladding	
Metals	Glass
Ceramic	Stone
Terra cotta	Plasters
Wood	Solar-systems